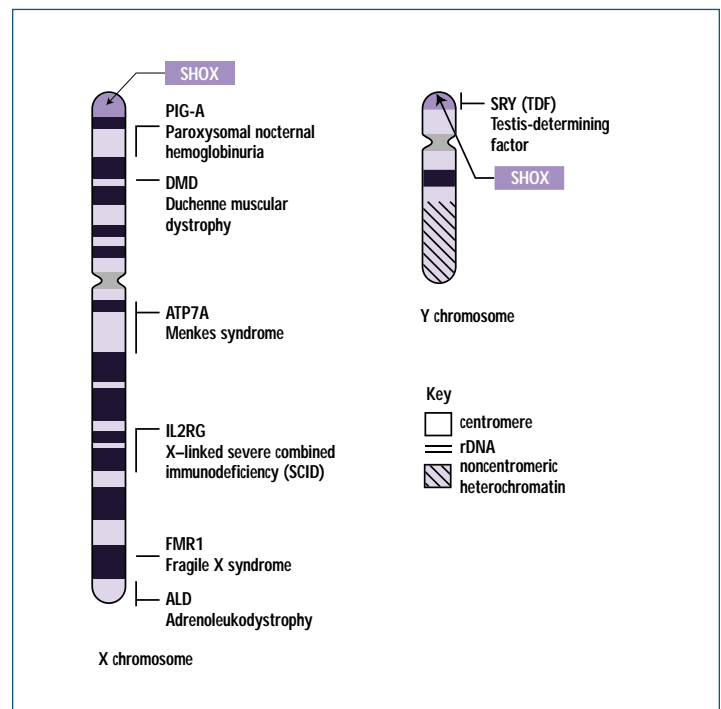


## A NEW DIAGNOSTIC TOOL FOR CHILDREN WITH SHORT STATURE

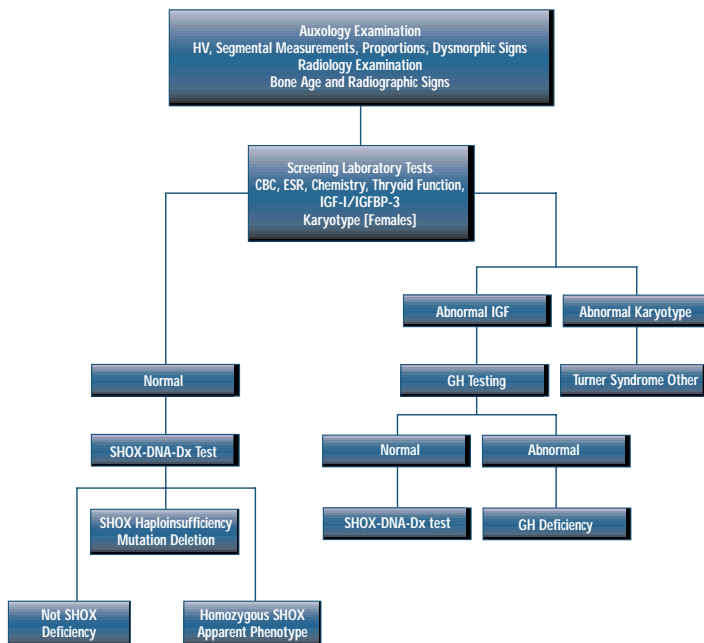
# SHOXDNA<sup>dx</sup> SM

SHOX-DNA-Dx is a genetic test that utilizes PCR based amplification and DHPLC heteroduplex analysis to detect mutations and deletions in the SHOX gene. Discovered in 1997, SHOX is an acronym for the Short Stature Homeobox gene that is located on the short arm of the sex chromosomes. Deficiency of one copy of the SHOX gene is believed to be the cause of short stature in Turner syndrome. In addition, research has shown that SHOX defects are present in the majority of individuals with Leri-Weill syndrome and in some children previously classified as having idiopathic short stature.

- *SHOX-DNA-Dx is the first widely available assay used to provide a definitive diagnosis for short children with SHOX deficiency.*
- *A positive result helps the physician, patient and family to move beyond the search for a diagnosis.*
- *The SHOX-DNA-Dx test detects both known and previously undocumented SHOX mutations.*



SHOX gene maps to PAR 1



SHOX diagnostic algorithm- SHOX-DNA-Dx testing in the diagnostic workup.

- *A positive SHOX-DNA-Dx test result may end the invasive, costly diagnostic testing process in short children.*
- *A minimum sample requirement of 1 ml ambient blood reduces patient discomfort and allows for ease of collection and shipment.*
- *The SHOX-DNA-Dx test was developed by Esoterix with license from Eli Lilly & Company.*

<b>Test Code</b>	504005		
<b>Specimen Requirement</b>	Recommended: 3 ml EDTA whole blood. Keep and ship at room temperature. Ship same day as collected. Minimum: 1 ml EDTA whole blood.		
<b>Methodology</b>	Mutation analysis by PCR, DHPLC and sequencing as needed.		
<b>CPT Codes</b>	83890 83898x12 83903x12 83912 83904x2*	<b>Assay Time/ Schedule</b>	2 days/ As needed

\* If a mutation is found, sequencing is required to confirm the findings and the CPT code 83904x2 would also apply.

**For more information or to obtain a supply kit,  
please call 800.444.9111 or visit [www.esoterix.com](http://www.esoterix.com).**

#### REFERENCES:

1. Shears, et al. Mutation and deletion of the pseudoautosomal gene SHOX cause Leri-Weill dyschondrosteosis. *Nature Genetics* 19:70-73 (1998).
2. Grigelioniene et al. Mutations in short stature homeobox containing gene (SHOX) in dyschondrosteosis but not in hypochondroplasia. *Human Genetics* 107: 145-149.
3. Ellison J.W. et al. PHOG, a candidate gene for involvement in the short stature of Turner syndrome. *Hum. Mol. Genet.* 6, 1341-1347 (1997).
4. Rao E. et al. Pseudoautosomal deletions encompassing a novel homeobox gene cause growth failure in idiopathic short stature and Turner syndrome. *Nature Genet.* 16, 54-63 (1997).
5. Belin V. et al. SHOX mutations in dyschondrosteosis (Leri-Weill syndrome). *Nature Genet.* 19, 67-69 (1998).
6. Blaschke R.J. & Rappold G.A. SHOX: Growth, Leri-Weill and Turner syndromes. (Review) *TEM* 11, 227-230.
7. Ogata et al. SHOX haploinsufficiency and overdosage: impact of gonadal function status (Review). *J Med Genet* 38, 1-6 (2001).
8. Ross J.L. et al. Phenotypes Associated with SHOX Deficiency. *J Clin Endocrinol Metab* 86, 5674-5680 (2001).
9. Binder G. et al. Auxology is a Valuable Instrument for the Clinical Diagnosis of SHOX Haploinsufficiency in School Age Children with Unexplained Short Stature. Abstract P-380 85th Annual Meeting The Endocrinology Society Philadelphia PA 2003.

**ESOTERIX**  
Laboratory Services

*Anything But Routine*

800.444.9111 ■ [www.esoterix.com](http://www.esoterix.com)

© 2003 Esoterix, Inc. All Rights Reserved 0803-0602-A-BL-3M