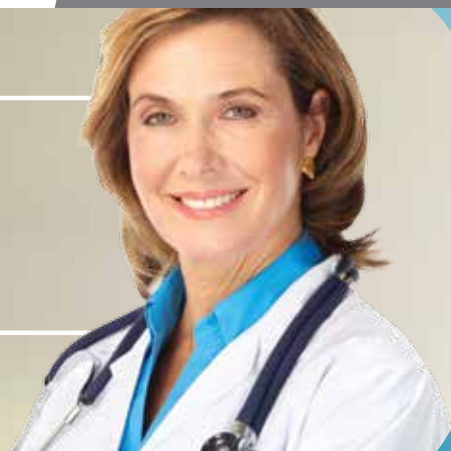


COAGULATION SERVICES

FOR THE HEMATOLOGIST-ONCOLOGIST

Helping you provide better patient care



LabCorp and its specialty laboratory, Colorado Coagulation, have combined their broad coagulation expertise to become a leader in hemostasis testing services

Through an extensive test menu, and consultative approach, clients have resources to help predict, diagnose, and manage even the most unusual bleeding and clotting disorders.

- Comprehensive test menu
- Board-certified pathologist consultations
- Extensive network of managed care health plans

Innovation

LabCorp, including Colorado Coagulation, is dedicated to maintaining leadership in coagulation testing through continuous involvement in clinical research and assay development.

Thrombophilia Assessment

Complete thrombotic risk evaluation through a broad menu of hemostasis assays

Abnormal APTT/PT Evaluation

A targeted approach to help identify the basis for abnormal APTT/PT screening assays

Bleeding Diathesis Diagnosis

Esoteric assays help detect abnormalities in various pathways to determine a patient's hemorrhagic risk

von Willebrand Disease

Variety of assays including multimer analysis and collagen binding activity with pathologist review

Pediatric Profiles (Bleeding and Clotting)

Specialized test combinations with minimum volume requirements

Scientific Expertise

With more than 30 years experience, Colorado Coagulation serves as LabCorp's specialty testing laboratory for coagulation testing.

- On-staff, board-certified pathologists experienced in hemostasis testing accessible for expert consultation
- Comprehensive coagulation test menu, including molecular and esoteric assays
- Reflex cascade testing
- Profiles established using current clinical guidelines
- Controlled sample handling to preserve specimen integrity
- Recognized leader in clinical trials

Superior Service

LabCorp's national infrastructure allows for a seamless, integrated service that makes it easier for clients to manage their coagulation testing needs.

- Physician-to-physician consultations and written pathologist interpretations
- Custom profile options
- 60-day sample retention
- Cost-efficient test profiles
- Convenient access to more than 1700 patient service centers nationwide
- Connectivity solutions



Scientific Team

On-staff, board-certified pathologists experienced in hemostasis testing accessible for expert consultation

Esoterix Colorado Coagulation Profiles*

Abnormal PT/APTT Reflexive Profile (Esoterix) 503335

APTT
PT/INR
dRVVT
Thrombin Time
Pathologist Interpretation
(Additional assays will be performed as necessary to determine the cause of the abnormality.†)

Antiphospholipid Syndrome, Comprehensive (Esoterix) 501056

APTT (If prolonged, APTT will reflex to Immediate APTT Mixing Studies.†)
Anticardiolipin Antibody, IgG/M/A
β2-Glycoprotein I, IgG/M/A
Antiphosphatidylserine, IgG/M
Antiprothrombin Antibody, IgG/M
dRVVT
Hexagonal Phospholipid Neutralization
Platelet Neutralization Procedure
Lupus Anticoagulant Interpretation

Bleeding Diathesis With Normal APTT/PT Profile (Esoterix)‡ 503541

α2-Antiplasmin Assay
Euglobulin Lysis Time
Factor VIII Activity
Factor VIII Chromogenic
Factor IX Activity
Factor XI Activity
Factor XIII Activity
Fibrinogen Activity
PAI-1 Activity (Reflex to PAI-1 Antigen and Tissue Plasminogen Activator (tPA) Antigen)
von Willebrand Factor Activity
von Willebrand Factor Antigen

Contact Factor Evaluation Profile (Esoterix) 500436

Factor XI Activity
Factor XII Activity
Prekallekrein (Fletcher Factor)
High Molecular Weight Kininogen (Fitzgerald Factor)

Extrinsic Pathway Coagulation Factor Profile (Esoterix) 500710

Factor II Activity
Factor V Activity
Factor VII Activity
Factor X Activity

Fibrinogen Evaluation Profile III (Esoterix) 500700

Fibrinogen Activity
Fibrinogen Antigen
Reptilase Time
Thrombin Time Mixing Studies
(Thrombin Time 1:1 NP; Thrombin Time — Heparin Neutralization)

Fibrinolysis Profile II (Esoterix) . . 502360

α2-Antiplasmin
D-dimer Quantitative (Automated)
Euglobulin Lysis Time
Fibrin Degradation Products
PAI-1 Activity
Plasminogen Activity
tPA Antigen

Intrinsic Pathway Coagulation Factor Profile (Esoterix) 500705

Factor VIII Activity
Factor IX Activity
Factor XI Activity
Factor XII Activity

Lupus Anticoagulant/Cardiolipin Antibody (Esoterix) 500711

β2-Glycoprotein I, IgG/M/A
APTT (If prolonged, APTT will reflex to Immediate APTT Mixing Studies.†)
PT/INR
Anticardiolipin Antibody, IgG/M
dRVVT
Thrombin Time
Hexagonal Phospholipid Neutralization
Lupus Anticoagulant Interpretation

Lupus Anticoagulant Profile (Esoterix) 500070

β2-Glycoprotein I, IgG/M/A
APTT (If prolonged, APTT will reflex to Immediate APTT Mixing Studies.†)
PT/INR
Anticardiolipin Antibody, IgG/M
dRVVT
Hexagonal Phospholipid Neutralization
Platelet Neutralization Procedure
Thrombin Time
Lupus Anticoagulant Interpretation

Markers of Coagulation Activation (Esoterix) 500604

Thrombin-Antithrombin Complex
Prothrombin Fragment 1+2 MoAb
D-dimer Quantitative (Automated)

ThrombAssure™ Enhanced (Esoterix) 502073

Factor II Gene Mutation
Factor V Leiden
β2-Glycoprotein I, IgG/M/A
Anticardiolipin Antibody, IgG/M/A
Antithrombin Activity
APTT (If prolonged, APTT will reflex to Immediate APTT Mixing Studies.†)
dRVVT
Hexagonal Phospholipid Neutralization
Homocysteine
Protein C Activity (chromogenic)
Protein S Antigen, Free
Lupus Anticoagulant Interpretation

Venous Thrombosis Profile (Esoterix) 501790

APC-Resistance (Reflex to Factor V Leiden if APCR is abnormal)
β2-Glycoprotein I, IgG/M/A
Anticardiolipin Antibody, IgG/M
Antithrombin Activity
APTT (If prolonged, APTT will reflex to Immediate APTT Mixing Studies.†)
dRVVT
Factor II Gene Mutation
Hexagonal Phospholipid Neutralization
Homocysteine
Protein C Activity (chromogenic)
Protein S Antigen, Free
Factor VIII Activity
Lupus Anticoagulant Interpretation

Venous Thrombosis (Hypercoagulability) Profile for Patients on Vitamin K Antagonist (VKA) Therapy (Esoterix)‡ 501768

APC-Resistance (Reflex to Factor V Leiden if APCR is abnormal)
β2-Glycoprotein I, IgG/M/A
Anticardiolipin Antibody, IgG/M
Antithrombin Activity
APTT (If prolonged, APTT will reflex to Immediate APTT Mixing Studies.†)
dRVVT
Factor II Gene Mutation
Hexagonal Phospholipid Neutralization
Homocysteine
Protein C Antigen
Protein S Antigen, Total
Factor VII Antigen
Protein C Antigen/Factor VII Antigen Ratio
Protein S Antigen/Factor VII Antigen Ratio
Factor VIII Activity
Lupus Anticoagulant Interpretation

von Willebrand Disease Profile (Esoterix)‡ 500247

APTT
Factor VIII Activity
von Willebrand Factor Activity
von Willebrand Factor Antigen
Collagen Binding Assays (von Willebrand Factor Collagen Binding Activity, von Willebrand Factor Collagen Binding Ratio)

von Willebrand (vWF) Screening Profile (Esoterix) 503333

APTT
Factor VIII Activity
von Willebrand Factor Activity
von Willebrand Factor Antigen

*Pathologist interpretation can be added to any of the profiles above by ordering 500683.

†If reflex testing is performed, additional charge(s)/CPT code(s) may apply.

‡This procedure may be considered by Medicare and other carriers as investigational and, therefore, may not be payable as a covered benefit for patients.

Note: For more detailed test-specific information, including the current specimen requirement, please consult the online Test Menu at <https://www.labcorp.com/wps/portal/testmenu>.

